



Happy Holly Days!



December 2017 Garden Planner

PLANT:



• Many **fruit trees** are here and ready to plant, while others will be arriving in January and February in biodegradable paper pots. See a list of the Paper Potted fruit trees on our website, www.Yamagamis.com or in the nursery. We often sell out of popular varieties, like the multi-grafts, so get your order in today!

• Dormant **roses in paper pots** start to arrive just before Christmas, in time for gift giving. Look for old favorites and the newest award-winners. See the list of incoming roses on our website, www.yamagamis.com.

• Plant any remaining **fall flower bulbs** into the ground. Plant pansies and violas over them for a riot of color winter through spring. Use **Espoma Bulb-Tone** to give bulbs a strong start. Follow our **FREE Fall Bulb Planting Guide** for depth recommendations.

• It's too late to plant lawn seed but you can install **sod**. It's a good time to patch dead spots but you want to be sure to match the patch with the existing turf. If you are not sure, bring a 4" x 4" sample (including roots) to the Info Center for us to ID.

• **Container Color gardens** brighten up the grayest of days. They are quick and easy to create and deliver spirit-lifting color right through the cold. Try mixing a spot of color into a Fairy Garden. Attend a Fairy Gar-

den class on December 9th for ideas. See Coming Events for class details,

• Flowering **holiday plants** like Poinsettias, Cyclamen, and Christmas cactus are wonderful for adding cheer to your home or office. They also make terrific hostess gifts. Keep them in a cool spot indoors with bright light, away from any heater vents. Make sure the pots can drain freely by cutting slits in the bottom of any decorative pot wrap. Ask for our **FREE Poinsettia Care Guide** so you can even get them to rebloom next year. **NOTE:** Many holiday plants are toxic if eaten so keep them away from pets.

FERTILIZE:

• Take advantage of the cool weather and rain to revive your **lawn**. Apply **Bonide Winterizer** to stimulate root and top growth. It is effective even in the chill of winter.

• Feed **Cymbidium Orchids** with **GrowMore Orchid Bloom Formula (6-30-30)** to promote bloom spikes for next year's flowers. Cymbidiums should be outdoors in a protected spot to set buds. Use frost fabric to protect them on nights below freezing. Bring them indoors to enjoy once half the flowers have started to open.

• Pansies, Primroses and other **cool season color** will thrive and bloom profusely with foliar applications of **Maxsea 16-16-16** every two weeks. It is fast acting for quick results!



PRUNE:

• Need some guidance for rose and fruit tree pruning? We recommend a handy little book, **How to Prune Fruit Trees and Roses**. It's an invaluable, easy to use tool.

• **Sharp pruning shears** are critical for clean pruning cuts and important for reducing hand pain on large pruning jobs. Use a **Bahco Sharpener** on your shears that have gotten dull. We also offer **Felco Pruning Shears**, long recognized as the best shears on the market, if what you need is a new pair.

• Winter garden clean-up includes pruning **most deciduous trees and shrubs**. Early spring-blooming ornamental shrubs are exceptions (like lilacs), so be sure to check with one of our Nursery Pros before cutting.

• Pruning **evergreens and conifers** now will help shape them, plus you can bring the often-fragrant clippings indoors for holiday decorations. Check around your garden for other decorative clipping material like rose hips, Nandina (Heavenly Bamboo), Southern Magnolia, Eucalyptus, and Citrus branches to customize wreaths and centerpieces.

• **Resist pruning** any frost damage until the last frost is past (usually March). The damaged portion of the plant will act as insulation and help protect the rest of the plant (including the tender growing tip) from further damage.

PREVENTATIVE MEDICINE:

• Don't let Jack Frost nip your garden! **Cloud Cover** and frost protec-





YAMAGAMI'S
GARDEN CENTER
SINCE 1948

tion fabrics can save plant lives. See our **FREE Frost Protection Guide**, full of great tips to protect your garden in winter, on our website or here in the nursery. One of the most overlooked precautions is simply to water deeply before a frosty night. Dry plants are more easily damaged. Plants to protect include Citrus, Hibiscus, Bougainvillea, and any other frost-tender plant.

• **Dormant Sprays:** To control fungal problems such as peach leaf curl, powdery mildew, and scab, use Monterey *Garden Liqui-Cop*.



To control over-wintering insect pests, including mites, aphids, and scale,



apply *Monterey Horticultural Oil Spray*. It will smother the insects overwintering in the bark of your trees and shrubs. Always spray on a calm day when rain is not expected for 48 hours. If rain occurs, you

will have to re-spray. See our **FREE Fruit Tree Care Calendar** here or on our website for more information.

• Slippery **moss and algae** in your lawn or garden can be minimized, Eliminate excess water, correct poor drainage, remove thick thatch layer, and reduce soil compaction with aeration. Thin shade trees to let in more light. For problem areas, use *Bayer 2-in-1 Moss & Algae Killer* which is not only safe for lawns but also for walkways, decks, roofs and mulches.

• To prevent **petal blight** from attacking Camellia blossoms, clean-up fallen flowers from under the plants before they start to bloom. Spread a

2" to 3" layer of clean, fresh mulch under them to keep old spores from splashing back on to the plants. Serious infections can be treated with *Immunox*.



Snails and slugs like cool moist weather, so continue to bait with OMRI approved *Sluggo* or hand pick these pests. Veggie seedlings and bedding plants are especially vulnerable. For problems with earwigs or sowbugs, use *Sluggo Plus* for OMRI approved control.

• Keep **Christmas garland and wreaths** from drying out so quickly by spraying them with *Cloud Cover*. It also seals in the moisture on Christmas trees, both living and cut.

GARDEN MAINTENANCE:

• **Citrus Leaf Miner** attacks new growth, causing curly leaves with white trails. Don't prune off the damaged leaves. Just as new growth is starting in spring, spray tips of branches with OMRI approved *Monterey Garden Insect Control*. Repeat applications every 7 to 14 days until new growth emerges clean. Spray at dusk to avoid contact with bees.

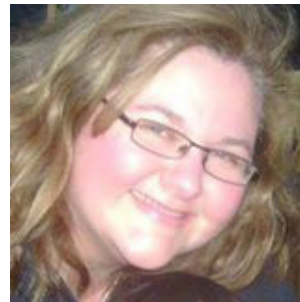
• Tips for keeping your **living Christmas tree** healthy: before bringing tree inside, water soil well and spray tree with *Cloud Cover*. Keep inside for no more than 7 to 10 days. Keep it away from fireplaces and heater vents. When the top 2 inches of soil are barely damp, water with 1 or 2 trays of ice cubes.



December 2017 Garden Planner

COMING EVENTS:

• **Saturday, December 9th at 11 AM: Fairy Garden Class with Tammy MacKenzie.** \$40 fee covers



instruction and materials to create and take home your own whimsical garden. It's a fun project to do with friends or family! Space is limited. Call us at 408.252.3347 to register. Attendees will receive 20% OFF their Fairy Garden decor purchases that day.

12+ Days of Christmas



• **Tuesday, December 12th** our **12 Days Of Christmas Deals** begins with **30% OFF all Camellias!** Check our facebook page, newsletter, or website for our daily deal until **Saturday, December 23rd** when we offer **40% OFF your entire purchase!**

HOLIDAY SCHEDULE



• **For Christmas: Yamagami's is closed** Sunday, December 24th through Tuesday, December 26th.
• **For New Year's: Yamagami's is closed** on Sunday, December 31st and Monday, January 1st.



Winter Garden Pruning Class Schedule will be out by mid-December.